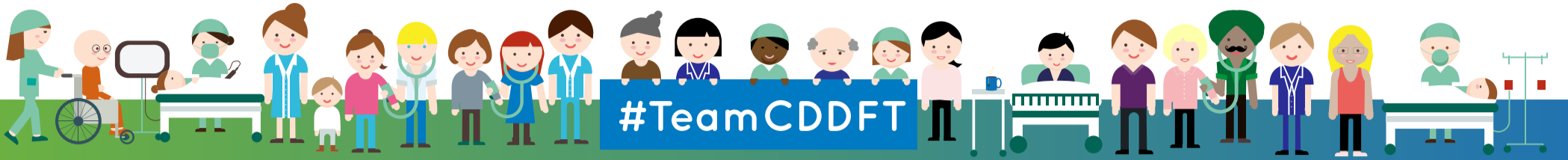




Community Specialist Dental Service



County Durham
and Darlington
NHS Foundation Trust



Our Community Specialist Dental Service has developed communication tools for our patients using a programme called 'Communicate in Print'.

These enable patients with autistic spectrum disorders and other communication problems to accept dental treatment.

This has been a very positive approach with brilliant feedback from parents and carers.

We use symbols both in the waiting area and within the surgery setting, with great success.

Having the symbols has helped many patients cope with the dental environment and has turned what would have been a very daunting and anxious time into a more positive experience.

“This has made the visit to the dentist a less daunting experience. The visual guide really helped the patient understand what the visit will entail. The books are excellent.”

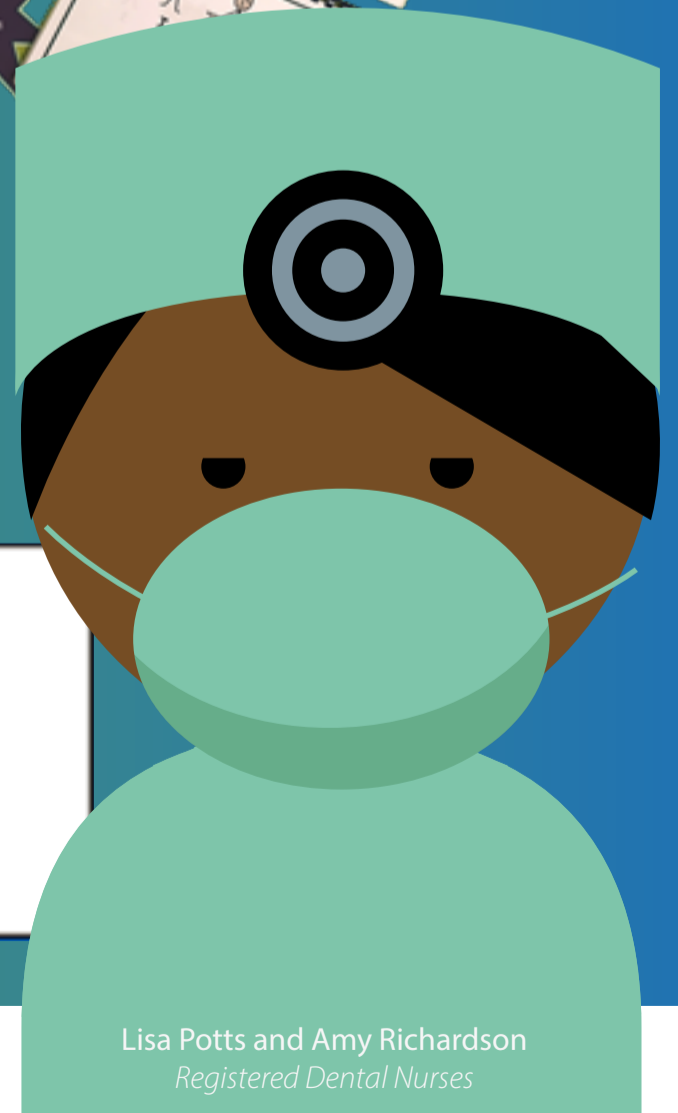
“The books have really helped my son with his dental visits. He now enjoys coming to the dentist.”



Symbols are images which are used to support text, making the meaning clearer and easier to understand. They provide a visual representation of a concept.



Communicate In Print



Lisa Potts and Amy Richardson
Registered Dental Nurses



with you  all the way

The books are designed with symbols so that patients of all ages, languages and reading abilities can communicate without the spoken word.



www.cddft.nhs.net